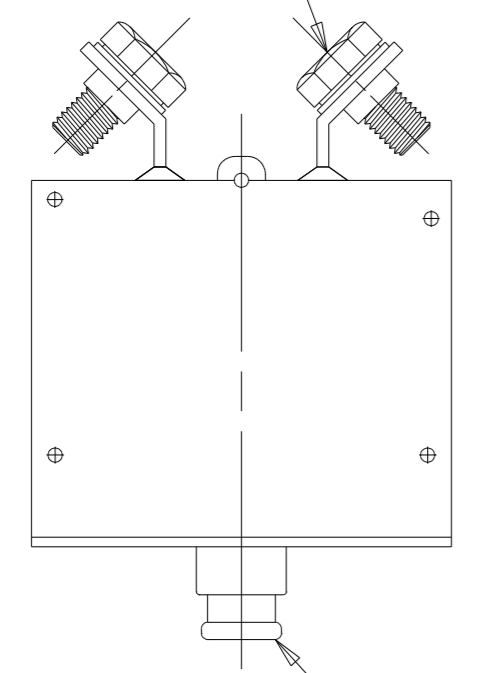
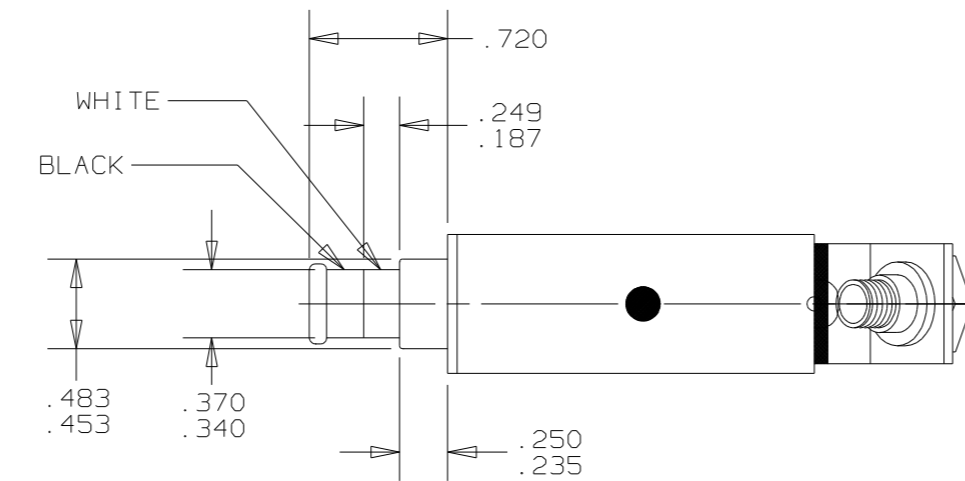
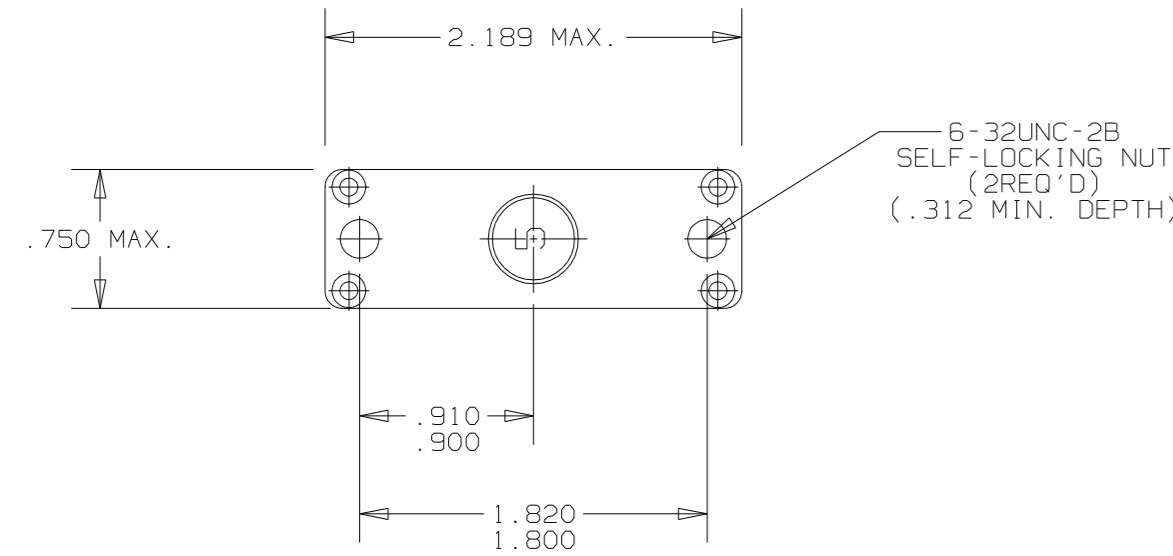


REVISIONS					
ZONE	LTR	DESCRIPTION	PROJECT	DATE	APPROVED
	P	ALTERED DRAWING TITLE	CRM47110	JRB 11-2-99	K.H.S.

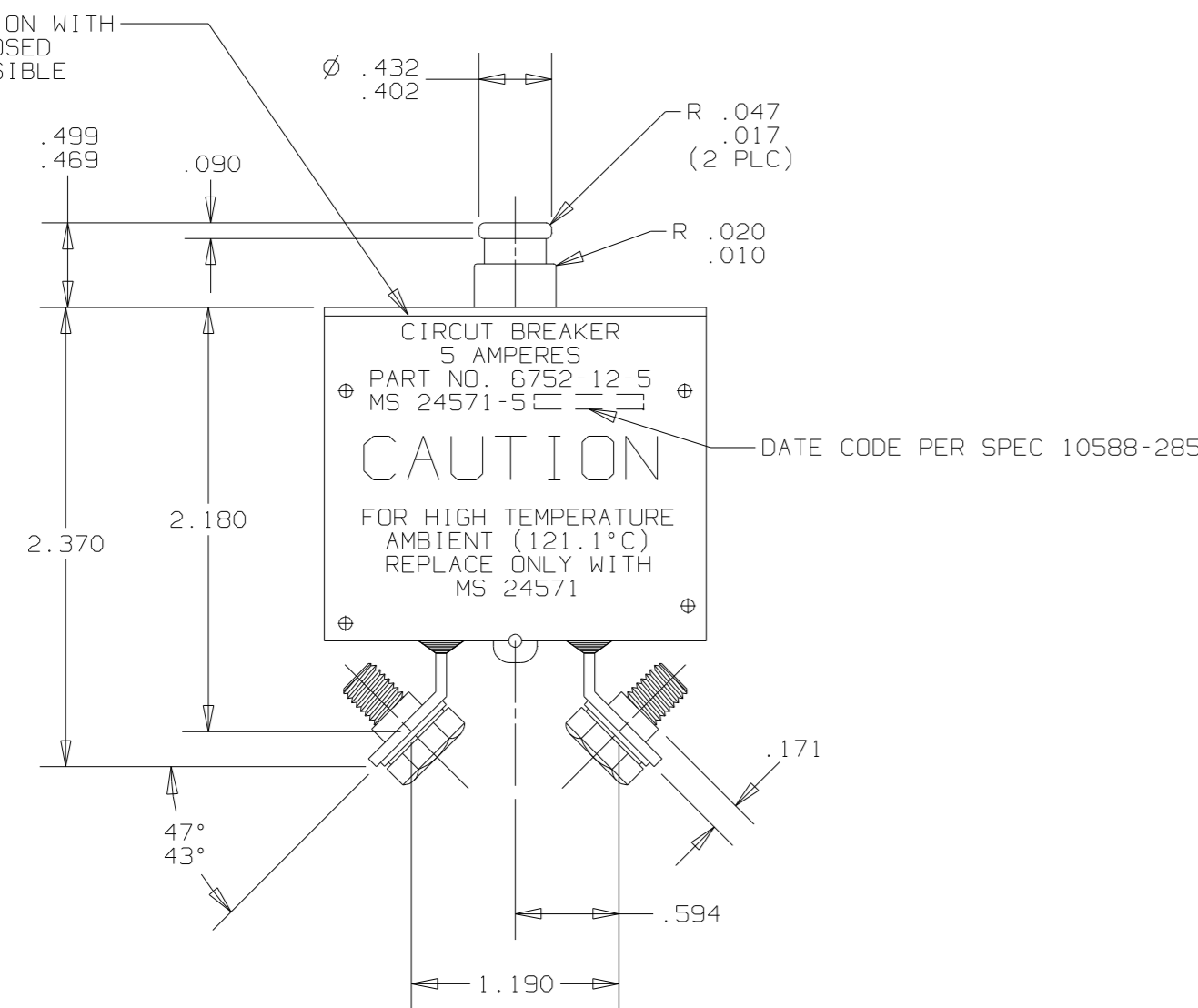
#8-32 NC-2A X 5/16 LONG PHILLIPS HEAD SCREW & CAPTIVE LOCKWASHER .046 THICK



BLACK



PUSH BUTTON POSITION WITH CIRCUIT BREAKER CLOSED WHITE BAND NOT VISIBLE



PART NO. 6752-12-5 SHOWN

PERFORMANCE CHARACTERISTICS
TESTED TO AND MEETS REQUIREMENTS OF MIL-C-27715 (USAF)

- CALIBRATION AMBIENT TEMPERATURE**

MIN. ULT TRIP	MAX. ULT TRIP	200%	400%	1000%	3000%
-54°C	110%	160%	SEE TABLE BELOW		
25°C	110%	138%	VALUES FOR -54°C TO 93.3°C		
93.3°C	105%	138%			
121.1°C	100%	138%			
- RUPTURE**

120 VAC	205 VAC	30 VDC	400 CYCLE	400 CYCLE	6,000 AMPS	4,200 AMPS	6,000 AMPS
- DURABILITY**

120 VAC MECHANICAL RESISTIVE LOAD	400 CYCLE (NO LOAD)	INDUCTIVE LOAD TOTAL	10,000 CYCLES	5,000 CYCLES	5,000 CYCLES	20,000 CYCLES
- VOLTAGE DROP, WHILE CARRYING RATED CURRENT**

AMP RATING	MAXIMUM VOLTAGE DROP
2.5	0.6 V
5	0.4 V
7.5	0.3 V
ALL OTHERS	0.25 V
- VIBRATION**

FREQUENCY	G LEVEL
5 - 10 CPS	0.2 DOUBLE AMPLITUDE
10 - 23 CPS	±1 G
23 - 74 CPS	0.036 DOUBLE AMPLITUDE
74 - 300 CPS	±10 G
300 - 600 CPS	±15 G
600 - 700 CPS	±14 G
700 - 1500 CPS	±10 G

BETWEEN RATINGS

2.5 - 5
5 - 10
7.5 - 15
10 - 20
15 - 35
- OPERATING FORCE**

OPENING: 1.5-8.0 LBS.
CLOSING: 4.0-12 LBS.
- DIELECTRIC STRENGTH**

1500 VAC, RMS.
- INSULATION RESISTANCE**

100 MEGOHMS AT 500 VDC.
- EXPLOSION PROOF**

WHILE INTERRUPTING RUPTURE CURRENTS.
- HUMIDITY**

240 HOURS.
- CORROSION RESISTANCE**

50 HOURS.
- SAND AND DUST**

12 HOURS.
- MECHANICAL SHOCK**

25 G FOR 11±1 MILLISECONDS.
- OVERLOAD CYCLING**

100 CYCLES AT 200% RATED CURRENT.
- FUNGUS RESISTANCE**

28 DAYS.
- STRENGTH OF TERMINALS**

25 LB. TENSILE LOAD, 20 IN-LBS. TORQUE LOAD.
- STRENGTH OF MOUNTING PROVISIONS**

30 LB. AXIAL LOAD, 10 IN-LBS. TORQUE LOAD.
- STRENGTH OF ACTUATOR**

25 LB. AXIAL LOAD, 40 LBS. NORMAL LOAD.
- ACCELERATION**

10 G'S FOR 1 MINUTE.
- RECLOSE**

NO AUTOMATIC RECLOSE.
- TRIP FREE**

RESETTABLE ONLY AFTER MOVING THE ACTUATOR TO THE FULL OPEN POSITION.

THIS DRAWING TAKES PRECEDENCE OVER MIL-C-27715 (USAF)

SUPERSEDES DWG. 6752-12 REV. 'N', DATED 6-1-99

PART NUMBER	MS PART NUMBER	AMP RATING		TRIPPING TIME FROM -53.9°C TO 93.3°C (TIME IN SECONDS)							
				200 %		400 %		1000 %		3000 %	
				MIN	MAX	MIN	MAX	MIN	MAX	MIN	MAX
6752-12-2	MS24571-2	-2	-2V	12	32	2.3	6.5	.32	1.1	.04	.155
6752-12-5	MS24571-5	-5	-5V	14	36	2.5	6.5	.45	1.1	.06	.13
6752-12-7	MS24571-7	-7	-7V	16	40	2.5	7.0	.34	1.1	.04	.12
6752-12-10	MS24571-10	-10	-10V	18	42	2.7	7.75	.45	1.2	.05	.125
6752-12-15	MS24571-15	-15	-15V	20	45	2.7	8.0	.36	1.2	.04	.13
6752-12-20	MS24571-20	-20	-20V	20	48	2.7	8.0	.36	1.2	.04	.12
6752-12-25	MS24571-25	-25	-25V	20	50	2.7	9.5	.36	1.2	.04	.12
6752-12-35	MS24571-35	-35	-35V	20	53	2.7	8.0	.36	1.2	.04	.12
6752-12-50	MS24571-50	-50	-50V	20	55	2.7	10.0	.36	1.4		

THIS IS A CAD DRAWING. THE GEOMETRY IN THE ASSOCIATED CAD COMPUTER FILE IS DIMENSIONALLY ACCURATE. WHEN DRAWING IS BEING REVISED, THE GEOMETRY MUST BE UPDATED IN ALL VIEWS AND ON ALL SHEETS.

UNLESS OTHERWISE SPECIFIED DIMENSIONS ARE IN INCHES	DRAWN	DATE	03-1	P18-1
	J.A. HORAN	2/19/63		
	ENGINEER			
	AL GENEST	2/21/63		
	APPROVED			
	DOUG POTTS	2/21/63		
	APPROVED			
	DOUG POTTS	2/21/63		
	<p>TOLERANCE ON FRACTIONS DECIMALS ANGLES</p> <p>±.030</p>			
	<p>MATERIAL</p>			
	<p>SIGNATURES ON FILE. REFER TO ELECTRONIC CHANGE NOTICE.</p>			

03-1 P18-1

TEXAS INSTRUMENTS
ATILEBORO, MASSACHUSETTS 02703

KLUXON
CONTROL PRODUCTS DIVISION

TITLE
6752-12 TYPE
PUSH PULL CIRCUIT BREAKER
ENVELOPE DRAWING

SIZE CODE IDENT NO.
82647

6752-12

SCALE: 4X

SHEET 1 OF 1